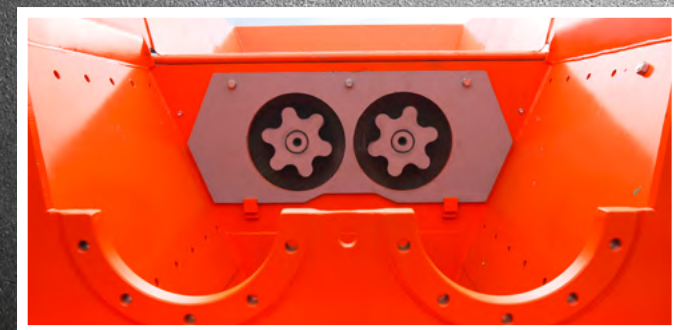


# HOTLINE

+49 (0)3695 / 85 855-0

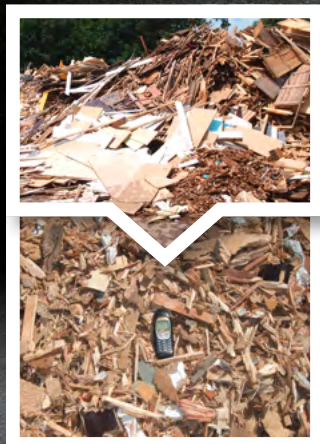
## PATENTED DUAL-SHAFT SYSTEM



### FEATURES AT A GLANCE

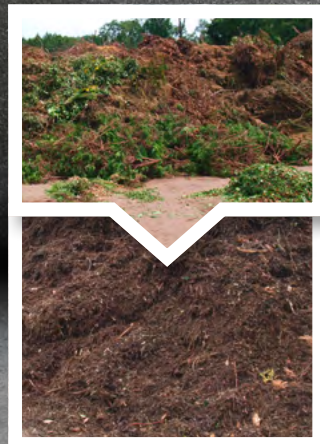
- ✓ **Patented T-blade profile**  
Precise cutting process (energy savings up to 15%)
- ✓ **Two tilting hoppers**  
Optimal feeding of the material to the tool shafts
- ✓ **Automatic reversing function**  
Protects against fracture of the cutting tools
- ✓ **Low noise level**  
Effective sound insulation and low engine speed
- ✓ **Low wear and maintenance costs**  
Maintenance friendly modular design

## APPLICATIONS WITH HIGH REQUIREMENTS



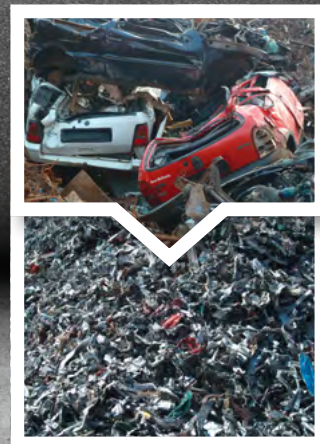
### WASTE WOOD

Processing waste wood of categories A1 to A4 for material/thermal recycling.



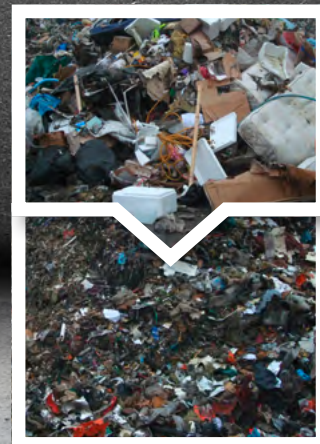
### GREEN WASTE

For the effective use of organic solid resources in bio-power plants.



### SCRAP METAL/CAR BODIES

Reducing the volume of valuable ferrous and non-ferrous metals.



### WASTE

Self-cleaning shafts prevent the machine from clogging by the mix of materials.



**ARJES**  
Recycling Innovation



**ARJES**  
Recycling Innovation

# VZ 750

Hydraulic Universal Shredder



### ARJES GmbH | Recycling Innovation

Werksplatz 1 / D-36433 Leimbach  
Deutschland / Germany  
Telephone +49 (0)3695 / 85 855-0  
Telefax +49 (0)3695 / 85 855-14  
E-Mail: info@arjes.de





# VZ 750

## FLEXIBLE, RELIABLE AND UNIVERSALLY APPLICABLE

The dual-shaft shredder VZ 750 developed by our technical director Norbert incorporates innovative technologies and decades of experience in the recycling industry into one powerful machine. Due to the hydraulic drive this shredder is suitable for almost any material – even the really big chunks! Different configurations as stationary, semi-mobile and mobile versions round off this attractive overall package!

MODEL	PERFORMANCE (kW / hp)	LENGTH x WIDTH x HEIGHT * (mm)	SHAFTS (mm)	WEIGHT (kg)
VZ 750 D	235 kW (320 hp)	7.000 x 2.400 x 2.700	1.750	16.000
VZ 750 DK	235 kW (320 hp)	7.900 x 2.500 x 2.800	1.750	20.000
VZ 750 E	250 kW	7.400 x 2.400 x 2.700	1.750	16.000

\* The values refer to the standard version, dimensions for special models may differ from the figures given here.



### AIR-FLOW SYSTEM

Optimized air circulation system for maximum performance.



### TILTING HOPPERS

Two tilting hoppers (front/back) for easier feeding of the material to the shafts.



### OVERBELT MAGNET

Hydraulically adjustable magnet for effective Fe separation.



### ENGINE AND CONTROL

Powerful VOLVO PENTA diesel engine with 320 hp. Central control panel with multi-display for monitoring of the machine data.



POWERED BY  
**VOLVO PENTA**



### DRAWBAR AND WHEEL AXLE

To move the machine at the work site with the help of wheel loaders, forklifts, etc.



### VZ 750 DK WITH TRACK SYSTEM

Maintain high maneuverability even on difficult terrain.

