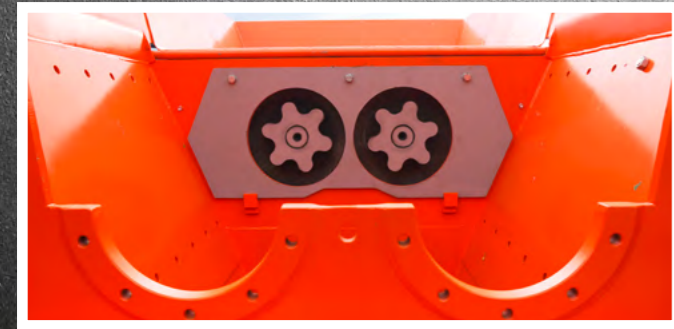
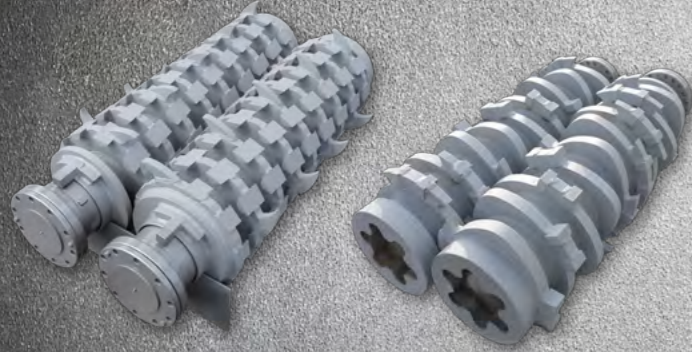


HOTLINE

+49 (0)3695 / 85 855-0

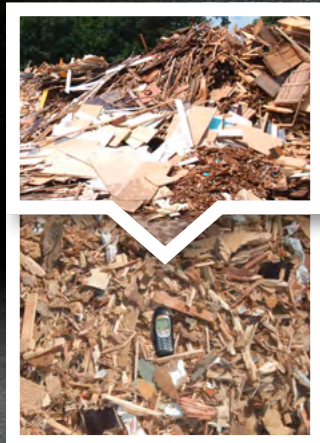
PATENTED DUAL-SHAFT SYSTEM



FEATURES AT A GLANCE

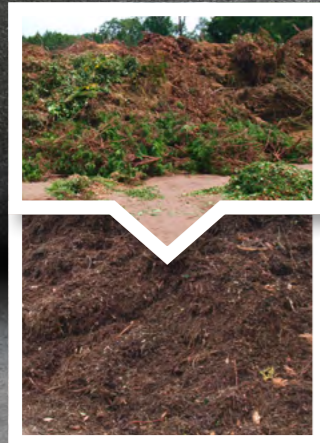
- ✓ **Patented T-blade profile**
Precise cutting process (energy savings up to 15%)
- ✓ **Two tilting hoppers**
Optimal feeding of the material to the tool shafts
- ✓ **Automatic reversing function**
Protects against fracture of the cutting tools
- ✓ **Low noise level of only 82 dBA**
Effective sound insulation and low engine speed
- ✓ **Integrated fine dust filter**
Frees the engine compartment of dust particles
- ✓ **Optional wheel axle with solid rubber tires**
Guarantees unrestricted maneuverability
- ✓ **Low wear and maintenance costs**
Maintenance friendly modular design

APPLICATIONS WITH HIGH REQUIREMENTS



WASTE WOOD

Processing waste wood of categories A1 to A4 for material/thermal recycling.



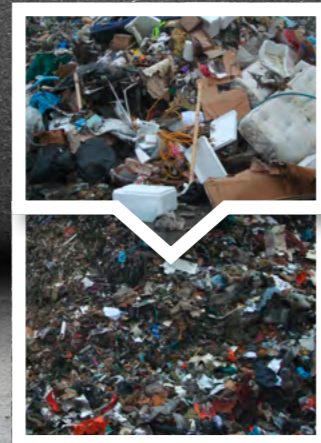
GREEN WASTE

For the effective use of organic solid resources in bio-power plants.



ROOTS / TREE LOGS

Our aggressive ripper hooks first break the massive material.



WASTE

Self-cleaning shafts prevent the machine from clogging by the mix of materials.



ARJES
Recycling Innovation



ARJES
Recycling Innovation

VZ 850

Hydraulic Universal Shredder



ARJES GmbH | Recycling Innovation

Werksplatz 1 / D-36433 Leimbach
Deutschland / Germany
Telephone +49 (0)3695 / 85 855-0
Telefax +49 (0)3695 / 85 855-14
E-Mail: info@arjes.de



VZ 850

POWERFUL, RELIABLE AND UNIVERSALLY APPLICABLE

The dual-shaft shredder VZ 850 developed by our technical director Norbert Hammel, incorporates innovative technologies and decades of experience in the recycling industry into one powerful machine. Due to the hydraulic drive this shredder is suitable for almost any material – even the really big chunks!

MODEL	PERFORMANCE (kW / hp)	LENGTH x WIDTH x HEIGHT * (mm)	SHAFTS (mm)	WEIGHT (kg)
VZ 850 D	565 kW (768 hp)	7.700 x 2.500 x 2.800	2.000	20.000
VZ 850 DK	565 kW (768 hp)	8.500 x 2.900 x 3.200	2.000	26.000
VZ 850 E	2x160 kW	8.000 x 2.500 x 2.800	2.000	20.000

* The values refer to the standard version, dimensions for special models may differ from the figures given here.



DRAWBAR AND WHEEL AXLE

To move the machine at the work site with the help of wheel loaders, forklifts, etc.



ENGINE AND CONTROL

Powerful VOLVO PENTA diesel engine with 768 hp. Central control panel with multi-display for monitoring of the machine data.



POWERED BY
**VOLVO
PENTA**



AIR-FLOW SYSTEM

Optimized air circulation system for maximum performance.



TILTING HOPPERS

Two tilting hoppers (front/back) for easier feeding of the material to the shafts.



OVERBELT MAGNET

Hydraulically adjustable magnet for effective Fe separation.



DISCHARGE BELT

Long troughed discharge belt with large discharge height of up to 4.800 mm.



VZ 850 DK WITH TRACK SYSTEM

Maintain high maneuverability even on difficult terrain.

