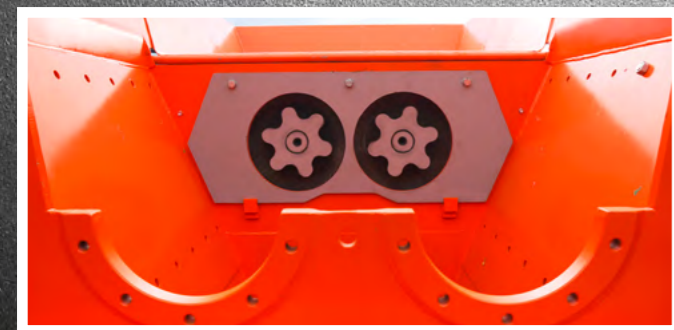
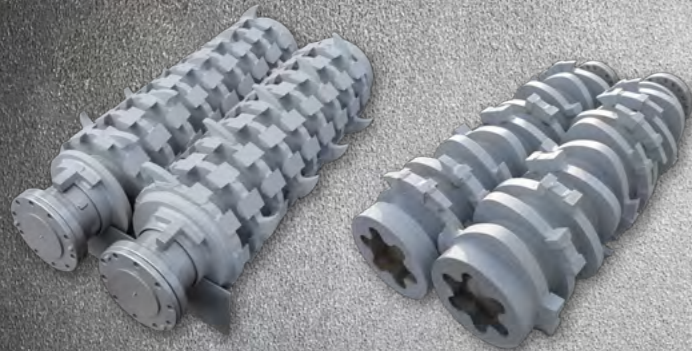


# HOTLINE

+49 (0)3695 / 85 855-0

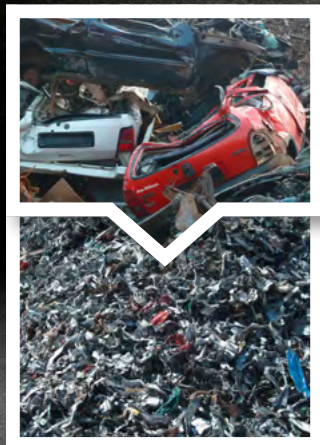
## PATENTED DUAL-SHAFT SYSTEM



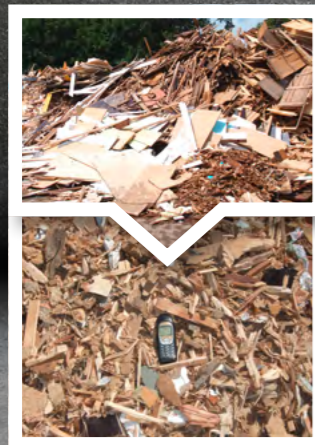
### FEATURES AT A GLANCE

- ✓ **Patented T-blade profile**  
Precise cutting process (energy savings up to 15%)
- ✓ **Two tilting hoppers**  
Optimal feeding of the material to the tool shafts
- ✓ **Automatic reversing function**  
Protects against fracture of the cutting tools
- ✓ **Powerful diesel engine with 768 hp**  
Also available with electric drive (2 x 250 kW)
- ✓ **Very high throughput**  
Depending on material and shaft setup up to 180 t/h
- ✓ **Low wear and maintenance costs**  
Maintenance friendly modular design

## APPLICATIONS WITH HIGH REQUIREMENTS



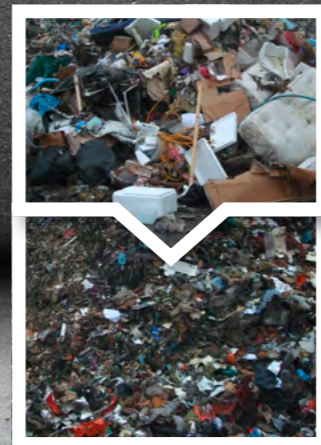
**SCRAP METAL/CAR BODIES**  
Reducing the volume of valuable ferrous and non-ferrous metals.



**WASTE WOOD**  
Processing waste wood of categories A1 to A4 for material/thermal recycling.



**ROOTS / TREE LOGS**  
Our aggressive ripper hooks first break the massive material.



**WASTE**  
Self-cleaning shafts prevent the machine from clogging by the mix of materials.



# VZ 950

## Heavy Duty Universal Shredder



### ARJES GmbH | Recycling Innovation

Werksplatz 1 / D-36433 Leimbach  
Deutschland / Germany  
Telephone +49 (0)3695 / 85 855-0  
Telefax +49 (0)3695 / 85 855-14  
E-Mail: info@arjes.de



# VZ 950

## POWERFUL, RELIABLE AND EFFICIENT

Demanding tasks require more powerful and more advanced solutions. The VZ 950 is the perfect machine to handle material of almost any kind. Due to its modular structure the time consumption and cost for maintenance is kept very low and therefore make this shredder an extremely powerful, efficient and reliable recycling machine.

MODEL	PERFORMANCE (kW / hp)	LENGTH x WIDTH x HEIGHT * (mm)	SHAFTS (mm)	WEIGHT (kg)
VZ 950 DK	565 kW (768 hp)	10.300 x 3.000 x 3.300	2.500	42.000
VZ 950 DT	565 kW (768 hp)	12.900 x 3.000 x 4.000	2.500	39.000
VZ 950 E	2x 250 kW	9.000 x 3.000 x 3.300	2.500	35.000

\* The values refer to the standard version, dimensions for special models may differ from the figures given here.



### AIR-FLOW SYSTEM

Optimized air circulation system for maximum performance.



### TILTING HOPPERS

Two tilting hoppers (front/back) for easier feeding of the material to the shafts.



### OVERBELT MAGNET

Hydraulically adjustable magnet for effective Fe separation.



### ENGINE AND CONTROL

Powerful VOLVO PENTA diesel engine with 768 hp. Central control panel with multi-display for monitoring of the machine data.



POWERED BY  
**VOLVO PENTA**



### TRACK SYSTEM

Maintain high maneuverability even on difficult terrain.



### VZ 950 DK WITH SCRAP METAL ATTACHMENT

