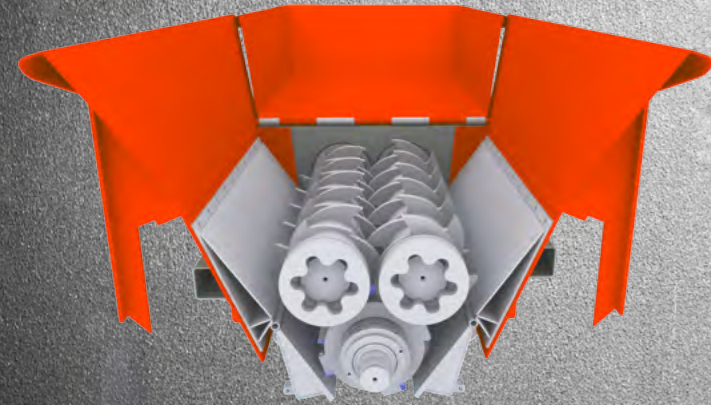


# HOTLINE

+49 (0)3695 / 85 855-0

## NEW // TRI-SHAFT SYSTEM

For maximum performance and precise final product!

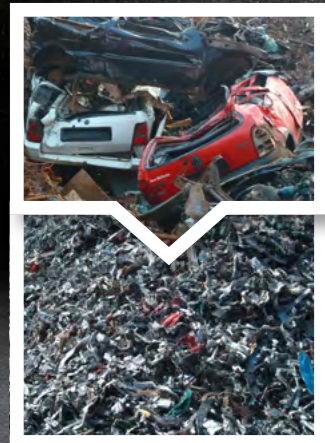


The tri-shaft system is based on a multi-stage cutting process. First the primary shaft breaks the material into coarse chunks. Then the hydraulic bearing secondary shaft cuts the pre-shredded material into a precise final product.

### FEATURES AT A GLANCE

- ✔ **Tri-shaft cutting process**  
Multiple stages for precise final product
- ✔ **Powerful diesel engine with 768 hp**  
Also available with electric drive
- ✔ **Automatic reversing function**  
Protects against fracture of the cutting tools
- ✔ **Two tilting hoppers**  
Optimal feeding of the material to the tool shafts
- ✔ **Very high throughput**  
Depending on material and shaft setup up to 180 t/h
- ✔ **Low wear and maintenance costs**  
Maintenance friendly modular design

### APPLICATIONS WITH HIGH REQUIREMENTS



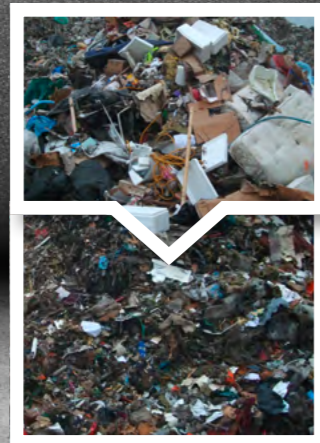
#### SCRAP METAL / CAR BODIES

Reducing the volume of valuable ferrous and non-ferrous metals.



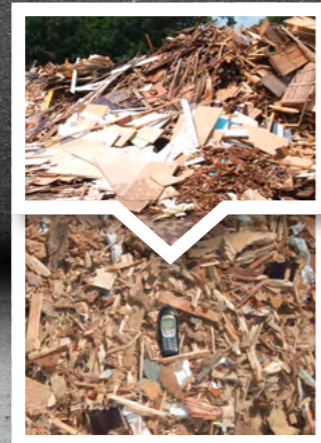
#### ROOTS / TREE LOGS

Our aggressive ripper hooks first break the massive material.



#### WASTE

Self-cleaning shafts prevent the machine from clogging by the mix of materials.



#### WASTE WOOD

Processing waste wood of categories A1 to A4 for material/thermal recycling.



# TRISTAR

Heavy Duty Shredder with Tri-Shaft System



#### ARJES GmbH | Recycling Innovation

Werksplatz 1 / D-36433 Leimbach

Deutschland / Germany

Telephone +49 (0)3695 / 85 855-0

Telefax +49 (0)3695 / 85 855-14

E-Mail: info@arjes.de





# TRISTAR

## MAXIMUM PERFORMANCE AND HIGH EFFICIENCY

Due to the multi-stage cutting process even the hardest material can be crushed with high precision and removes the need for a secondary shredding pass. This makes it ideal for the processed material to pass quickly and directly to downstream stations for further processing.

| MODEL   | PERFORMANCE (kW / hp) | LENGTH x WIDTH x HEIGHT* (mm) | SHAFTS (mm) | WEIGHT (kg) |
|---------|-----------------------|-------------------------------|-------------|-------------|
| TriStar | 565 kW (768 hp)       | 11.000 x 2.500 x 3.700        | 2.000       | 37.000      |

\* The values refer to the standard version, dimensions for special models may differ from the figures given here.

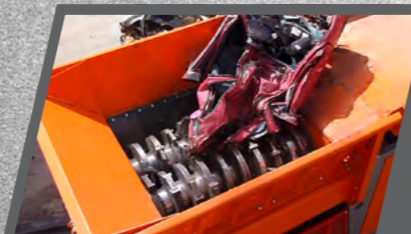


**NEW**  
TRISTAR



### AIR-FLOW SYSTEM

Optimized air circulation system for maximum performance.



### TILTING HOPPERS

Two tilting hoppers (front/back) for easier feeding of the material to the shafts.



### OVERBELT MAGNET

Separating the final material from ferrous metals. With reel protection!



### ENGINE AND CONTROL

Powerful VOLVO PENTA diesel engine with 768 hp. Central control panel with multi-display for monitoring of the machine data.



### TRAILER WITH REMOVABLE DOLLY AXLE

### TRACK SYSTEM

Maintain high maneuverability even on difficult terrain.



POWERED BY  
**VOLVO PENTA**

